

KY 3005 (Ring Road) Extension

from Western Kentucky Parkway to US 31W, including a new interchange
with I-65

KYTC Item # 4-198.00
Hardin County, Kentucky

Kentucky Transportation Cabinet
Department of Highways
District 4
Elizabethtown, Kentucky



Public Information Meeting

Thursday, September 15, 2022, 5:00 – 7:00 p.m.
New Hope Community Church

Purpose of This Meeting

We are seeking your input regarding the proposed extension of KY 3005 (Ring Road) east approximately 2.5 miles to create a new full interchange with I-65 and then terminate at US 31W.

Project Review

This project was initially studied in 2013-2014. At the end of that process, the northern most alignment (Alt 3, Green) was identified as the “recommended” alternative. While some right-of-way was acquired, the project was soon paused for lack of funding.

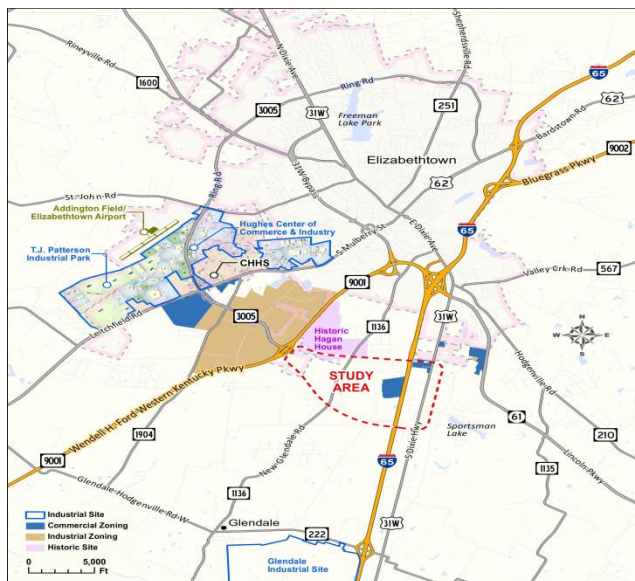
Now in 2022, the KYTC has obtained funding to restart plans to advance this project. Over the last few months, KYTC in partnership with the LTADD MPO, has developed new traffic forecast based on the latest area traffic volumes and forecasted land use changes, including the BOSK Ford Battery Plant in Glendale.

Tonight, the Project Team is reconsidering all four alignments options to extend Ring Road. The recommended alignment could change from the previously recommended Alternative 3, depending on updated costs, impacts, the traffic forecasts, and public input.

Purpose and Needs for This Project

The **Purpose** of the project is to improve the east-west system connectivity between the generally north-south radial routes and the interstate network on the south side of Elizabethtown.

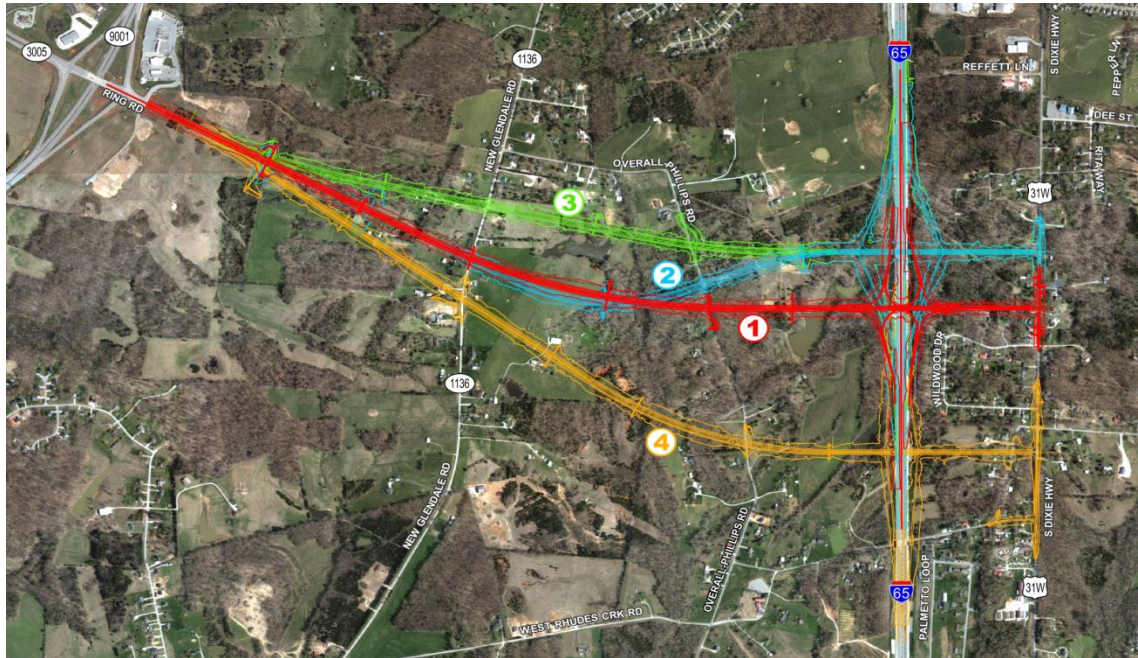
The **Needs** for the project are in large part based on the existing and projected land uses (residential and industrial) and resulting traffic patterns in this part of the county.



Build Alternatives

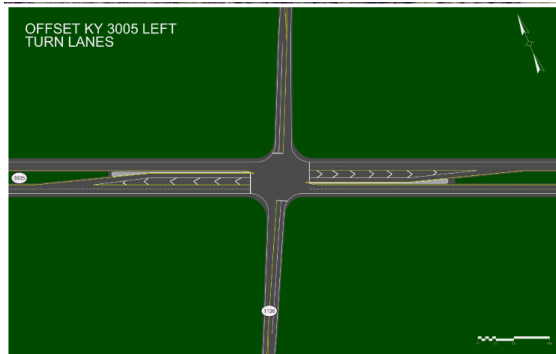
The following alternatives are being presented tonight:

- Alternative 1 (Red)
- Alternative 2 (Blue)
- Alternative 3 (Green)
- Alternative 4 (Orange)

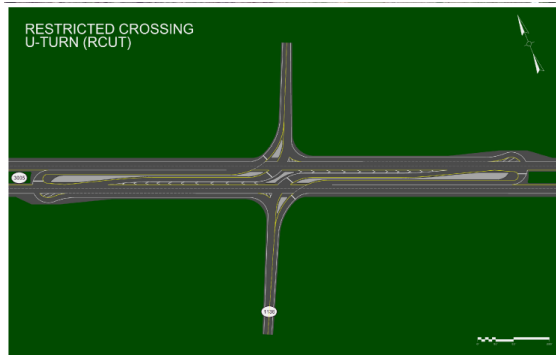


Intersection Considerations

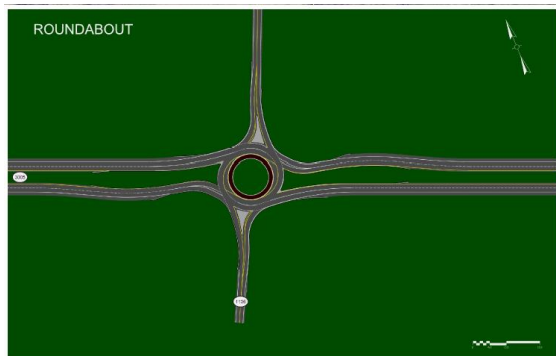
Offset KY 3005 Left Turn Lanes



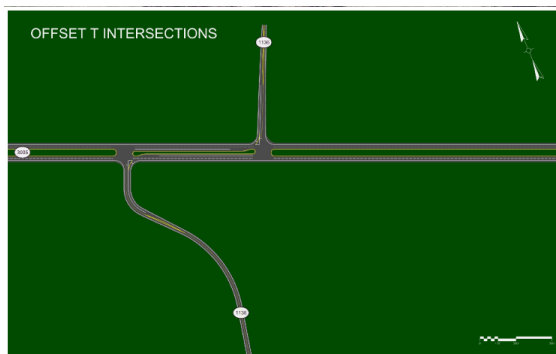
RCUTs



Roundabouts



Offset T intersections



Funding Estimates

Phase	Fiscal Year	2022 Highway Plan Budget	Alt 1 (RED)	Alt 2 (BLUE)	Alt 3 (GREEN)	Alt 4 (ORANGE)
Design	2023	\$500K	\$500K	\$500K	\$500K	\$500K
Right of Way	2024	\$4M	\$6.1M	\$6.0	\$6.8	\$9.7
Utilities	2024	\$2M	\$1.4	\$1.4	\$1.3	\$1.9
Construction	2025	\$26.5M	\$24.3M - SPUI	\$26.5M	\$25.8M	\$26.1M
Totals:		\$32.5	\$32.3	\$34.4	\$33.6	\$38.2
Residential Relocations			6	5	7	23

Next Steps

Following an alternative selection, anticipated later this year. The Current (2022) KYTC Highway Plan includes funds for Right-of-Way acquisition and utility relocation in Fiscal Year 2024. Construction funds are scheduled for Fiscal Year 2025.

For those attending, please complete and leave the included comment sheet tonight or send feedback to the district office by **September 30, 2022**.

Contact Information

KYTC, District 4
P.O. Box 309
634 East Dixie Highway
Elizabethtown, Kentucky 42701
Attention: Joseph Ferguson

OR

Email: Joseph.Ferguson@ky.gov
Call: (270) 766-5066